

PEOPLE'S EMERGENCY CENTER YOUTH SERVICE INC.



People's Emergency Center (PEC) and Youth Service Inc. (YSI) each have a long reputation of providing high-quality services for families, youth, and children. The two agencies have partnered for several years on parenting programs, respite shelter for young children, and services for youth and young adults experiencing homelessness. PEC and YSI are now affiliating and offering comprehensive services for clients.

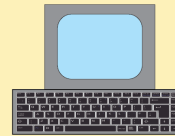
Populations PEC & YSI Serve:



Birth-5 Years Old



6 Years Old-12 Years Old



13 Years Old-17 Years Old



18 Years Old-26+ Years Old



Families: Parents, Grandparents

Services PEC & YSI Provide:

Nuturing Families

PEC

- Housing & Case Management
- Building Early Links for Learning
- Action for Early Learning
- Economic Mobility Services

YSI

- Baring House Crisis Nursery
- Family Empowerment Services
- Parenting Collaborative
- Truancy Intervention & Prevention Service

Empowering Youth

PEC

- Youth Healers Stand Up!
- Bernice Elza Homes
- Transitional Housing

YSI

- Youth Emergency Services
- Teen Success
- Housing for Youth Collaborative

Promoting Child Safety

PEC

- Center for Parenting & Early Childhood Education
- Behavioral Health Services Management
- Case Management

YSI

- Runaway & Homeless Youth
- Status Offender Project
- Time Limited Family Reunification
- National Safe Place Site

Strengthening Neighborhoods

PEC

- West Philadelphia: Quality of Life Programs
- Technology Access
- Economic Development
- Community Organizing

YSI

- Parenting Collaborative: Nicetown CDC & CHOP Karabots