

# Building Early Links for Learning Year One Outcomes

Sara Shaw, M.S.

University of Delaware

Sarah Vrabic

Villanova University

# BELL Goals

**Increase ECE enrollment by 20%**

**Increase developmental friendliness of  
shelter environments**

# ECE Enrollment Baseline Data

Federal Head Start Data

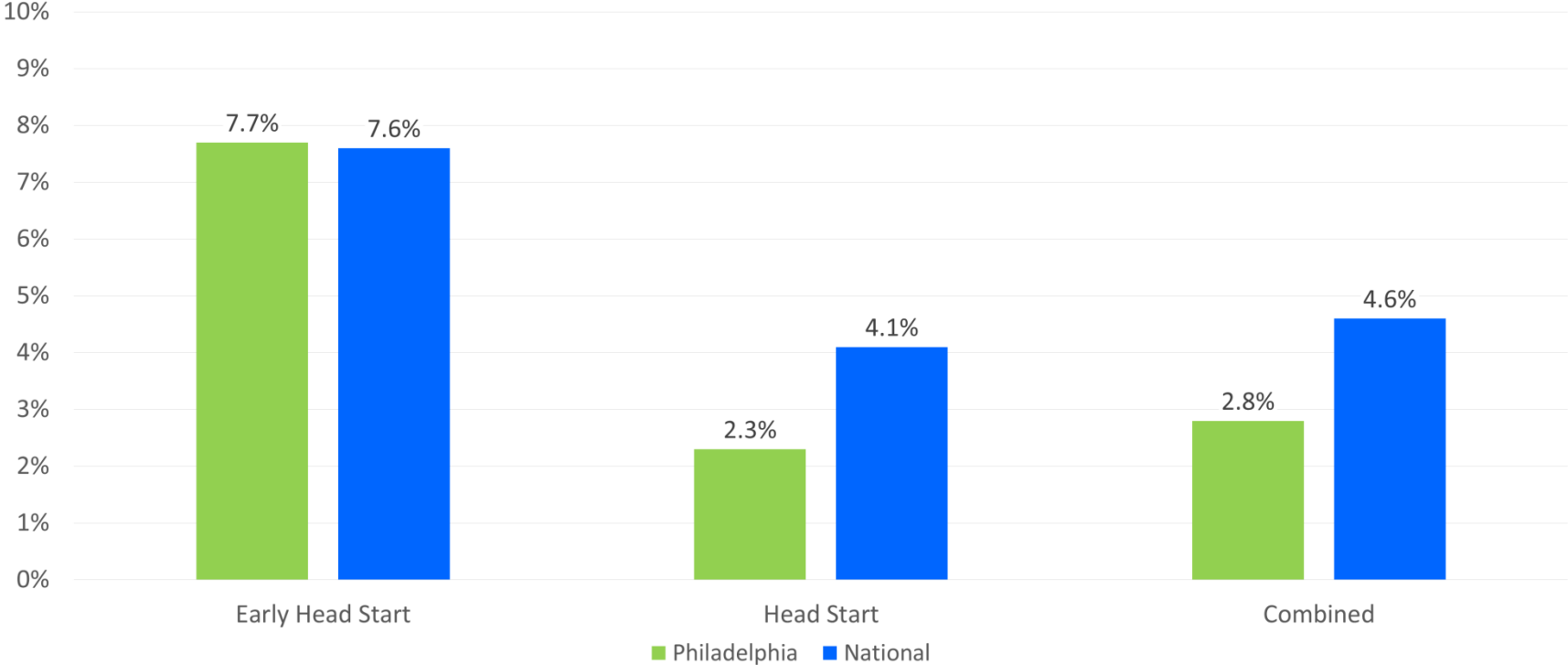
OHS Preschool Attendance Census

BELL ECE Survey

# Federal Head Start Data

Evaluate how many children enrolled in Head Start programs are experiencing homelessness

# Percentage of Children Experiencing Homelessness Attending EHS/HS



# ECE Enrollment

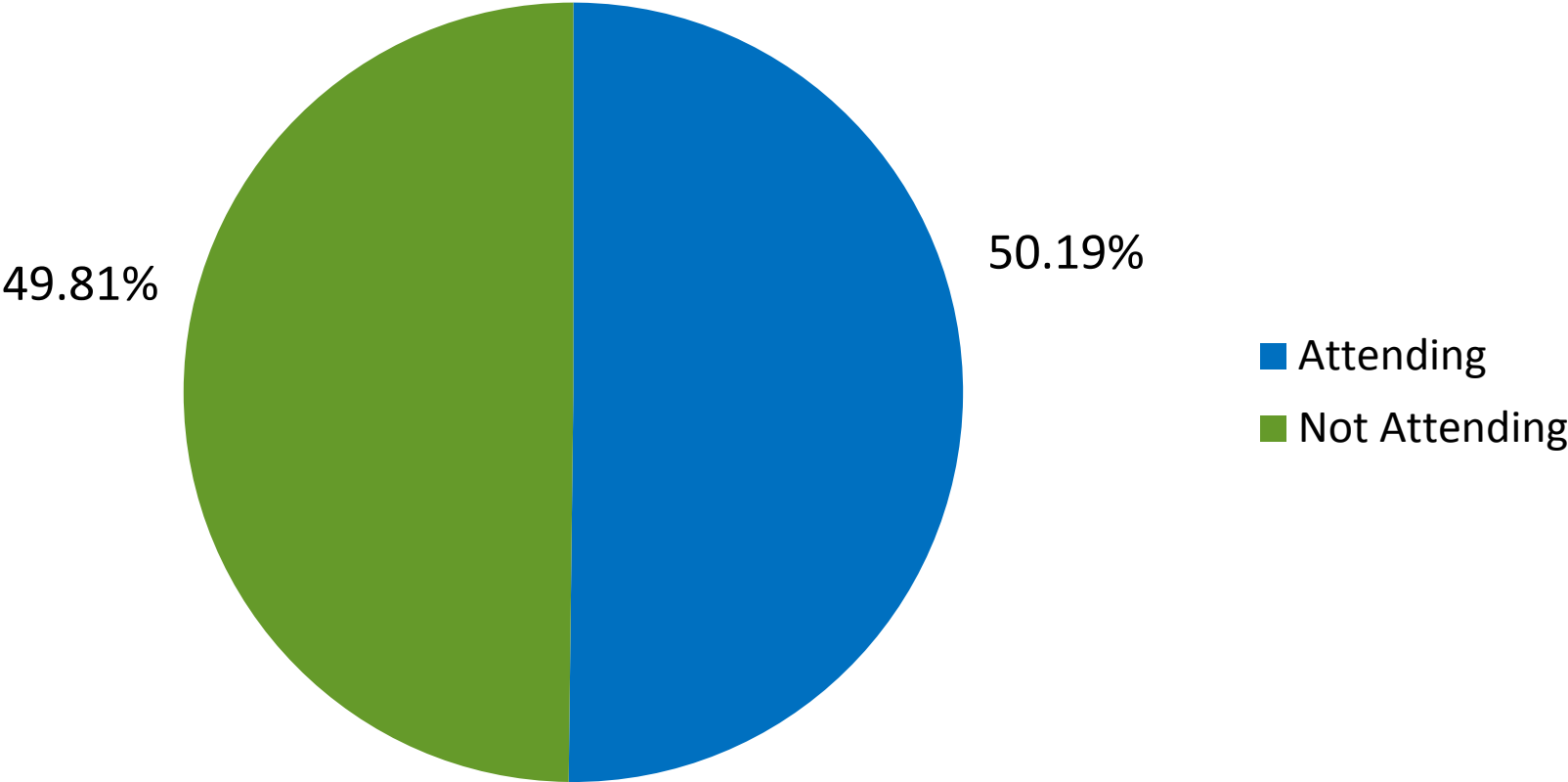
Federal Head Start Data

## **OHS Preschool Attendance Census:**

- Evaluated the percent of children ages 3 – 5 attending preschool in all Philadelphia EH/TH programs

# OHS Preschool Attendance Data

Children Experiencing Homelessness (Ages 3 - 5)



# ECE Enrollment

Federal Head Start Data

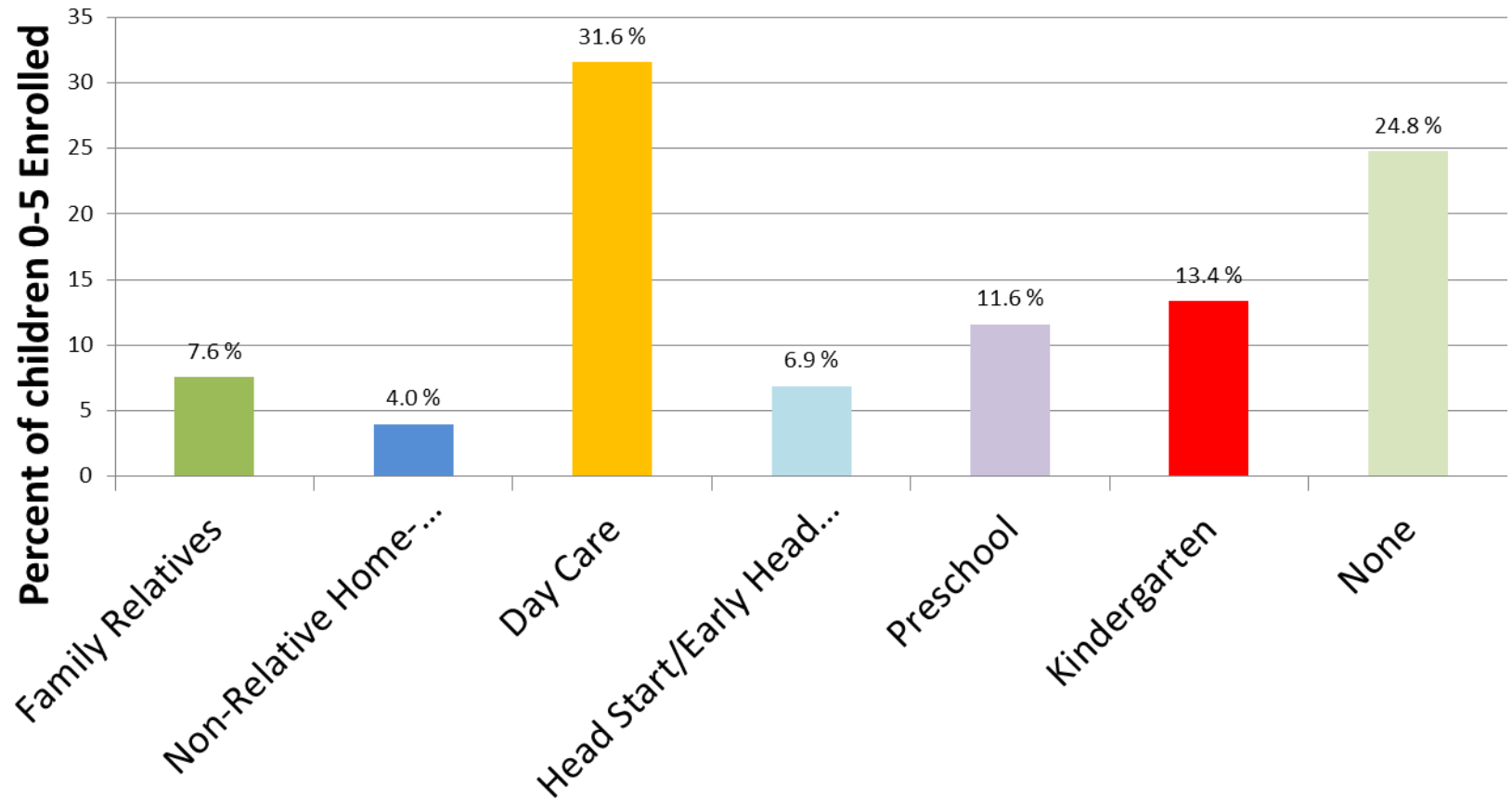
OHS Preschool Attendance Data

## **BELL ECE Survey:**

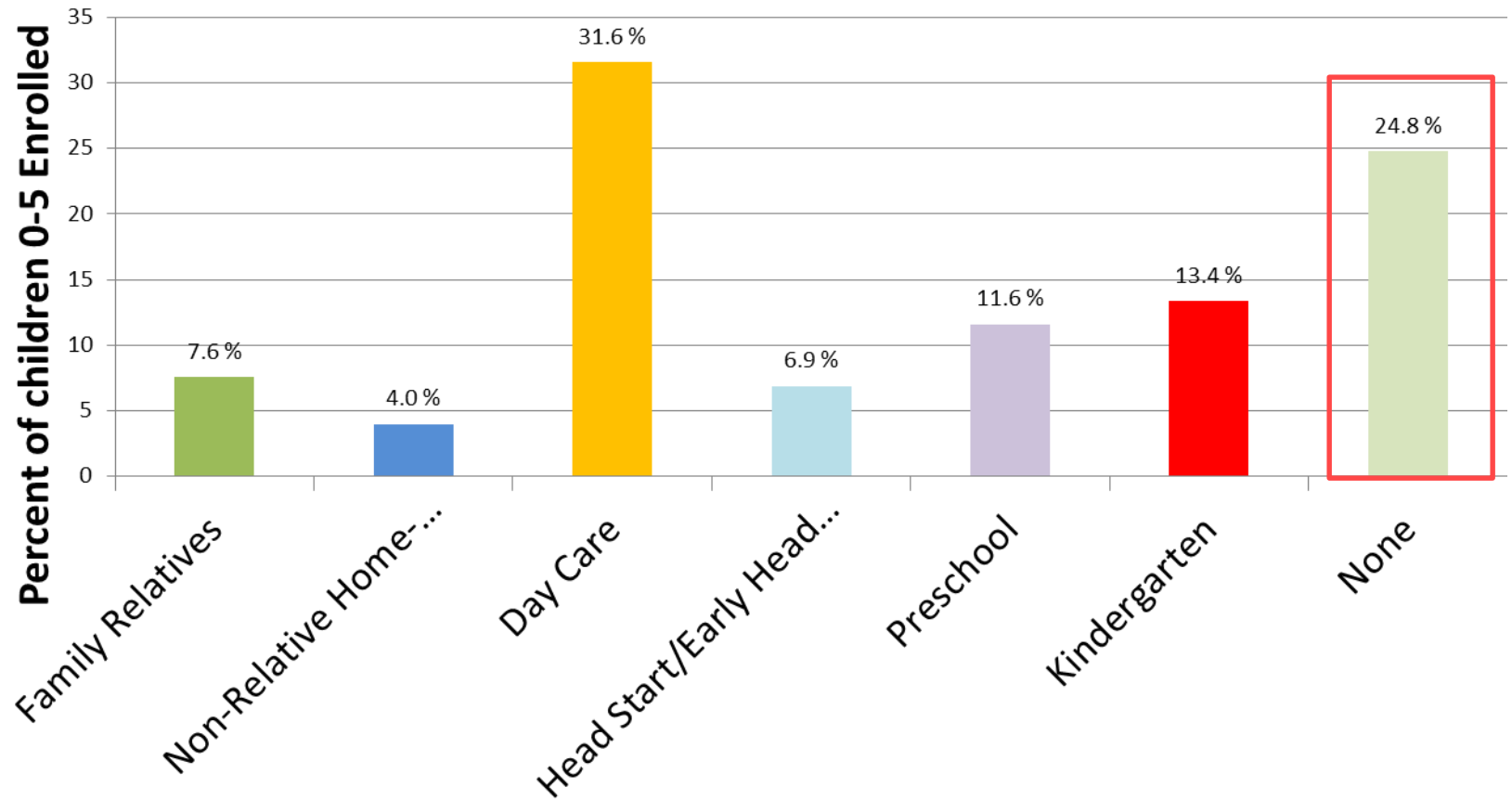
- Focused on ECE enrollment in any program, including unlicensed
- Surveyed for 0 – 5 year olds
- Conducted at Time 1 Self-Assessment
- Asked how enrollment tracked at each site



# BELL Survey Data: ECE Use of Young Children Experiencing Homelessness



# BELL Survey Data: ECE Use of Young Children Experiencing Homelessness



# ECE Enrollment Recommendations

Enhance data collection precision in terms of ECE program **location** and **quality** rating

- Ask specific attendance rates

Track Longitudinally – Monthly Basis

# The Early Childhood Self-Assessment



ADMINISTRATION FOR  
**CHILDREN & FAMILIES**

# EARLY CHILDHOOD SELF-ASSESSMENT TOOL FOR FAMILY SHELTERS

Updated April 2015

Office of the Deputy Assistant Secretary for Early Childhood Development, Administration for Children and Families, U.S. Department of Health & Human Services



*A guide to support the safe and healthy development of young children in shelter settings*

# What is Philadelphia doing well?

## Space for Families:

- Dining

## Supporting family connections:

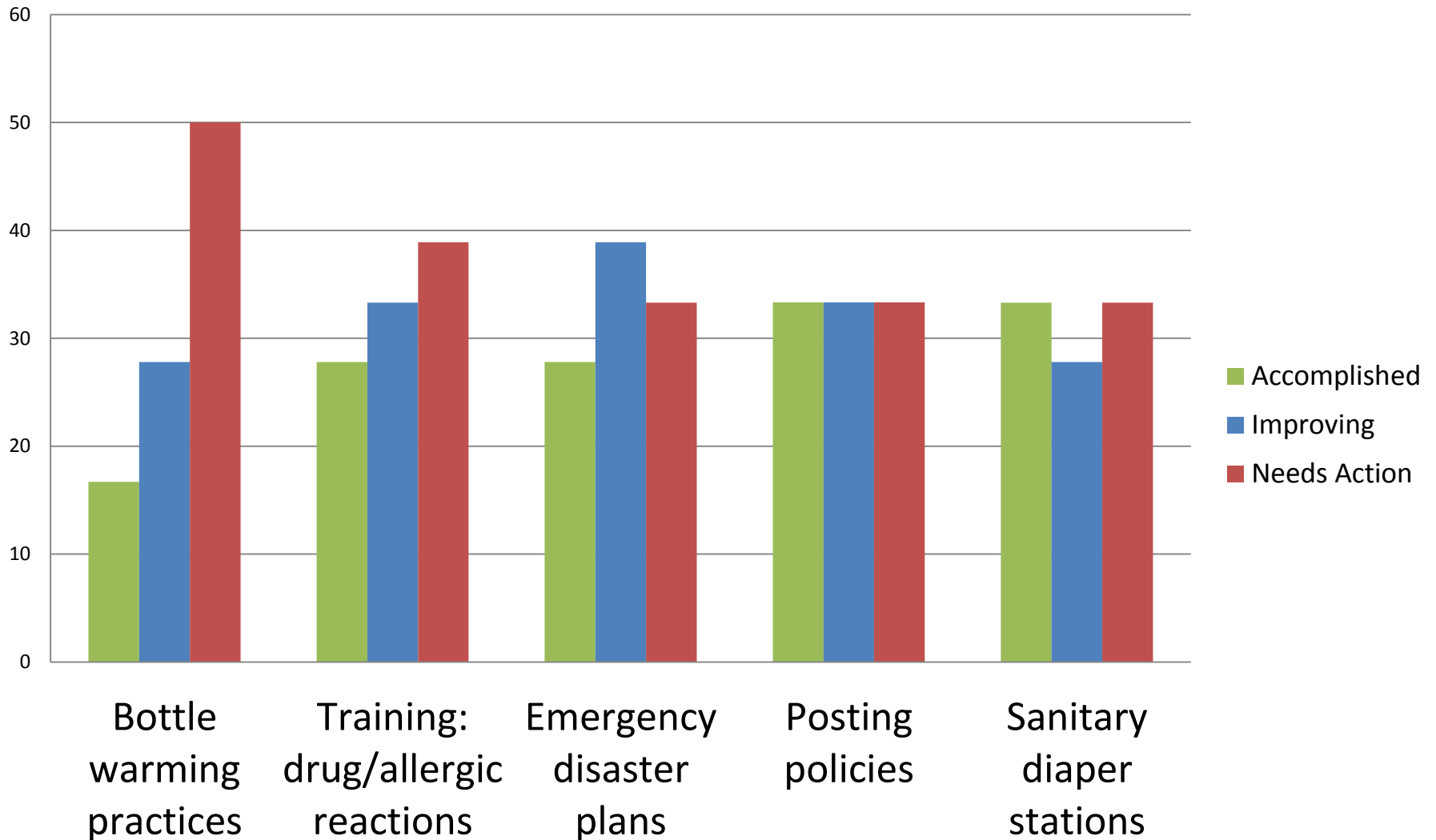
- Public benefits
- Accommodate ECE schedules

## Safety:

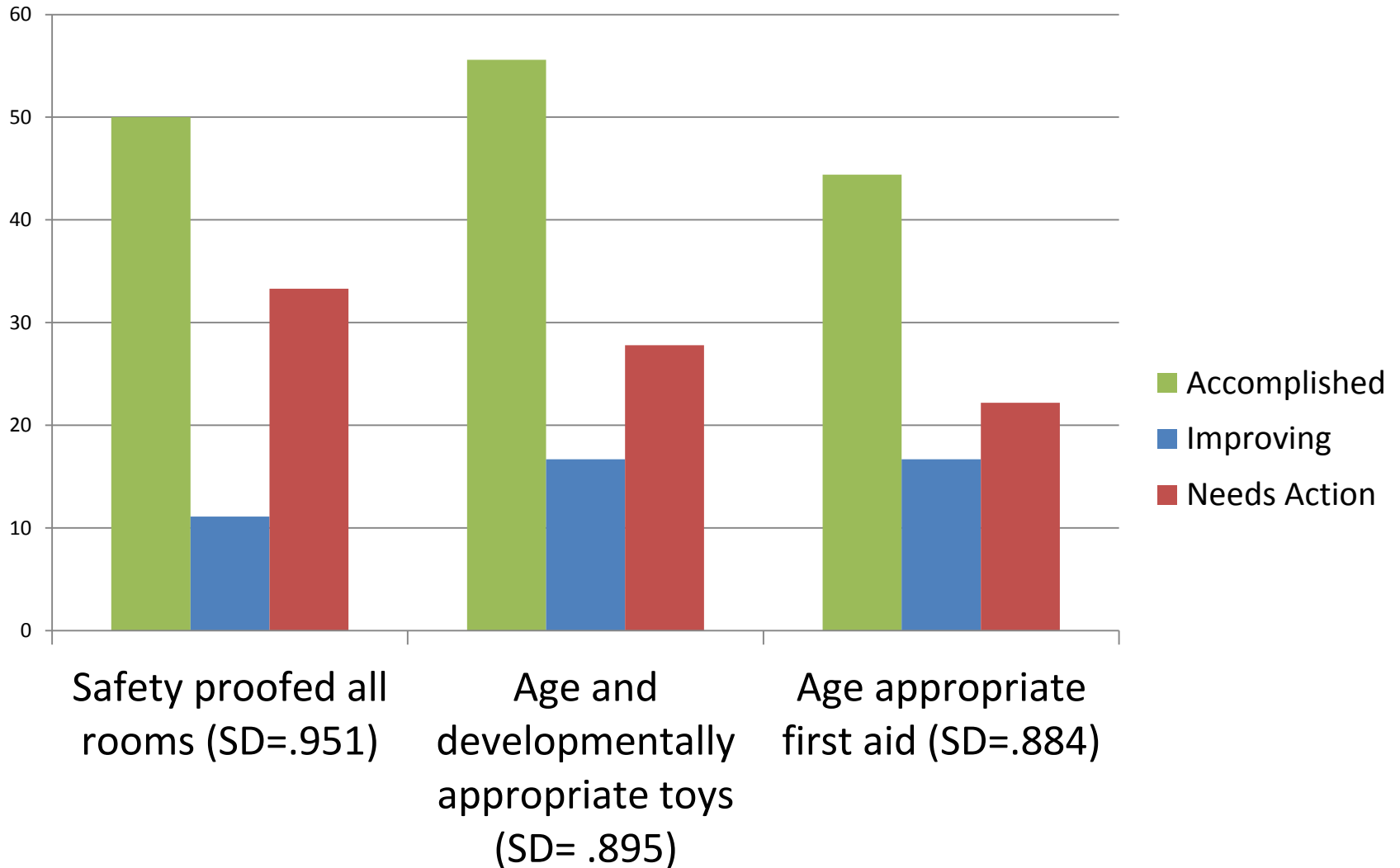
- Immunizations
- Visitation
- CPR training
- Food safety

# Where does Philadelphia need support?

Chart Title



# Greatest variability

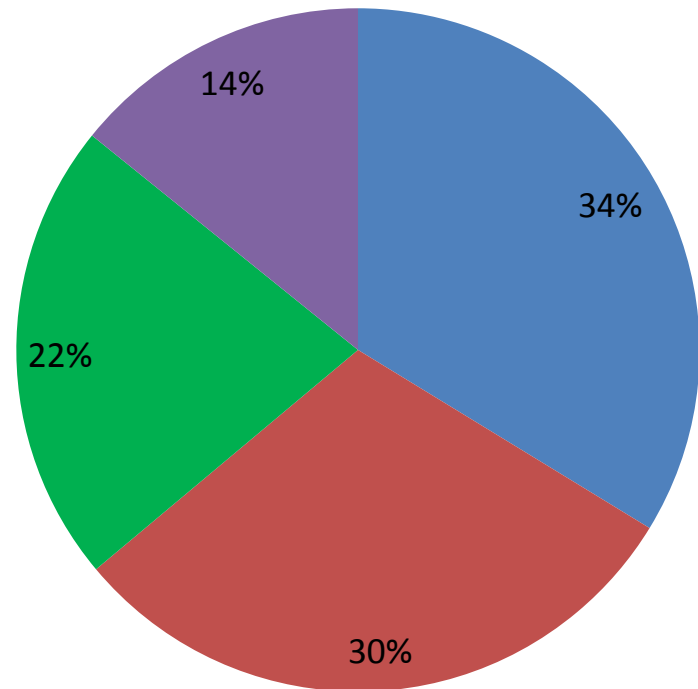




# What types of improvements were requested?

- **Infants:**
  - Tummy time
  - Breastfeeding
- **Toddlers/Preschool**
  - Furniture
  - Toys
- **Safety**
  - Outlet covers
  - Cabinet Locks
  - Toilet Locks
  - Mirrors
  - Building maintenance
- **Admin./Building**
  - Bulletin boards
  - Lamination

■ Infant ■ Preschool ■ Safety ■ Admin



# Trainings Requested

- Effects of homelessness on child development
- Adverse drug and allergic reactions
- Ongoing needs:
  - CPR
  - Trauma informed care

# Before



# After

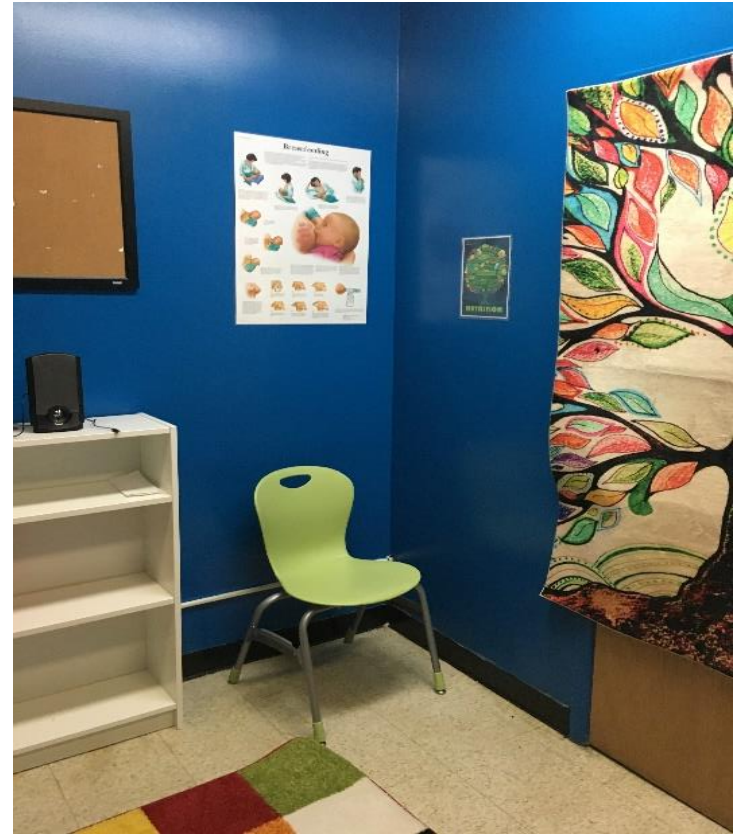


# Before





# After



# Implications

- More consistency in tracking/documenting ECE
- Variability across housing programs
- Support for infants and toddlers in housing programs
- Trainings for staff to support families with 0-5 year olds
- Dissemination of information to families

**QUESTIONS?**