



PEOPLE'S EMERGENCY CENTER

A Brief History

1970S-1980S



1972

JIM HALLAM & BOB EDGAR FOUND PEC AS A STUDENT SERVICE MINISTRY, RUN ENTIRELY BY VOLUNTEERS WITH A \$12,000 BUDGET.



1976

PEC INCORPORATED & RECEIVED 501C STATUS.



1986

PEC ADDED CASE MANAGEMENT AND BECAME FORMALLY FOCUSED ON WOMEN AND CHILDREN.



1988

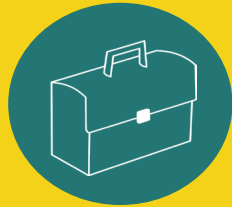
GLORIA'S PLACE, NAMED AFTER PEC'S 2ND EXECUTIVE DIRECTOR, OPENS TO INCREASE SHELTER CAPACITY AT 39TH & SPRING GARDEN.

1990S-2000S



1992

THE PEC COMMUNITY DEVELOPMENT CORPORATION (PECCDC) ESTABLISHED TO SUPPORT AFFORDABLE HOUSING IN WEST PHILADELPHIA.



1993

PEC CREATED THE JOBS OPPORTUNITIES AND BUSINESS SKILLS (JOBS) PROGRAM FOR PARENTS IN SHELTER.



1997

ROWAN HOUSE OPENS WITH 26 TRANSITIONAL UNITS, IMANI I OPENS, AND PEC ESTABLISHES ITS OWN FOUNDATION.



1998

POLICY INITIATIVE ESTABLISHED.

2000S-2020S



2002

IMANI II OPENS AND PEC BEGAN WORKING WITH LANCASTER AVENUE BUSINESSES TO IMPROVE FACADES AND ATTRACT NEW BUSINESSES.



2003

PEC BEGAN PROVIDING COMPUTER CLASSES & PUBLIC COMPUTER LABS AT LOCATIONS SUCH AS FAMILIES FIRST AND GLORIA'S PLACE.



2006

PEC ORGANIZES THE FIRST LANCASTER AVENUE JAZZ & ARTS FESTIVAL AT SAUNDERS PARK GREENE.



2014

PEC COLLABORATES WITH PROMISE ZONE AND PROMISE ZONE NEIGHBORHOOD COMMITTEES TO SUPPORT THE COMMUNITY.



2016-2018

BUILDING EARLY LINKS FOR LEARNING (BELL), WEST PHILADELPHIA ACTION FOR EARLY LEARNING, LOLA38, & NEIGHBORHOOD TIME EXCHANGE DEVELOPS.



2019

PEC CREATES EARLY CHILDHOOD DEPARTMENT.



2019

YSI AFFILIATION BEGINS.



2020

PEC MOVED MOST SERVICES ONLINE DUE TO COVID-19.



2020

PEC BEGINS USING PARENTS AS TEACHERS HOME VISITING PROGRAM FOR THE FIRST TIME IN A SHELTER AND A VIRTUAL PALTFORM.